

# inPixio Photo Maximizer

High precision image zoom  
without quality loss



Quick Start Guide

---

# Contents

System requirements.....	3
Installation .....	3
Overview.....	4
Interface.....	5
Menus and the toolbar .....	5
The workspace .....	7
The navigator.....	7
The filmstrip .....	8
Tabs.....	8
Usage .....	9
Cropping a photo.....	11
Choose a new format.....	12
Rotate and/or straighten a photo .....	12
Saving a retouched photo.....	12
Working with Photo Maximizer .....	13
Enlarge a photo .....	13
Adjust settings .....	14
Set a photo's tone scale .....	16
Adjust the sharpness manually.....	17
Denoise.....	18
Film Grain .....	19
Create and apply a preset .....	20

For more information.....	23
inPixio on the Internet.....	23
Technical Support.....	23
Compatibility.....	23
Copyright.....	23

## System requirements

The required configuration for optimal use of inPixio photo products is as follows:

- Windows 7, Windows 8 and Windows 10 (32-bit & 64-bit)
- Intel® Pentium® 1 GHz processor or equivalent
- 4 GB of RAM - (8 recommended)
- 700 MB of free disk space, mouse and keyboard
- Internet connection

---

## Installation

You have purchased an inPixio photo product for download. Please download the application on your computer then double-click the downloaded file to install it.

A setup wizard guides you step by step through the various stages of installation.

Once the installation is complete, the application's icon is placed on your Desktop by default.

---

## Overview

inPixio photo products are photo retouching and enhancing applications for optimizing or re-creating a photo.

*Remark: Certain features mentioned in this guide are only available in the Pro version.*

It is easy to get started thanks to its graphical intuitive user interface organized into modules.

**Photo Maximizer** offers a simple digital photo editor to optimize the enlargement of your photos in a few steps, whether to zoom in on a small area of a photo or enlarge a small photo.



## Interface

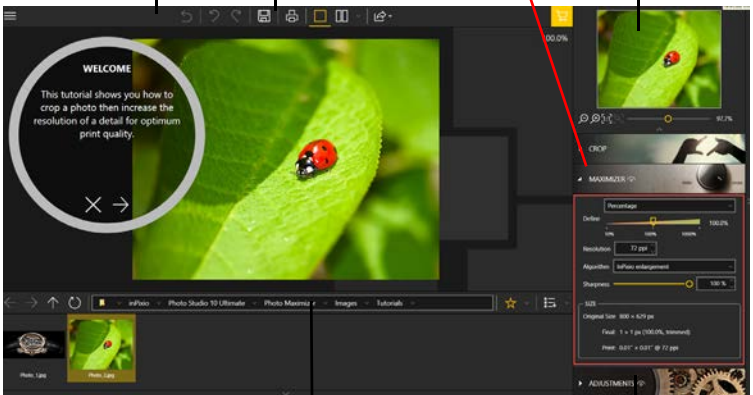
The user interface offers an easy-to-use solution to manage and optimize your photos:

**The menu and the toolbar:**  
Includes the main functions needed to manipulate your photos: Open, Save, Share, Print.

**The Save button:**  
This button confirms your settings and saves your retouched photo.

**The Maximizer tab:**  
This tab allows you to adjust the enlargement of your photo.

**The navigator:**  
Lets you move around and zoom in and out in the image.



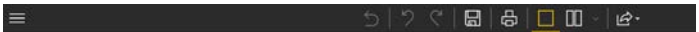
**The filmstrip:**  
Includes display options and lets you navigate through your folders.

**The workspace:**  
Lets you view the alterations you have made to your photo.

**Tabs:**  
Tabs group together the various tools you need to retouch your photos.

## Menus and the toolbar

The toolbar includes the following functions:



**Menu:**

Takes you back to the **Home** screen, lets you access the application's **Options** or the main functions you need to manipulate your photos.

**Revert to the original:**

Lets you restore your original photo at any time

**Cancel:**

Cancels your last action on your photo.

**Redo:**

Redoes the canceled action.

**Save...:**

Prompts you to save your retouched photo.

**Print...:**

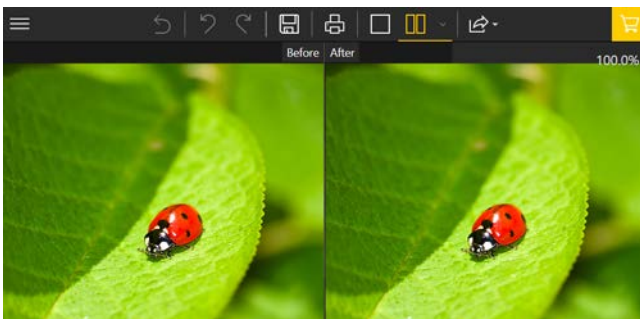
Prints your original or retouched photo on paper.

**Single View:**

Displays the alterations you have made to your photo in the preview window.

**Switch between before and after views:**

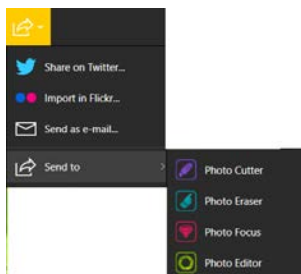
Proposes a complete or split **Before/After** view as shown below.



### Share/Import/Send:

Lets you share your work or continue retouching:

- Publish your photo on social media,
- Share easily by e-mail,
- Use other modules to cut out or erase elements on your photo.



## The workspace

By default, the workspace displays your photo in a **Single view**.

The alterations you have made to your photo are displayed simultaneously in the preview window.

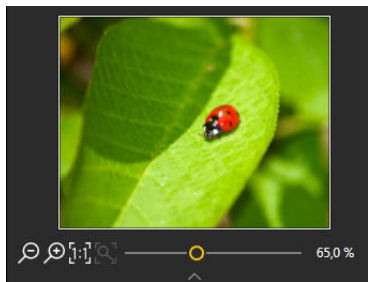
Choose one of the views proposed on the view options toolbar to better judge your retouching work in the photo.

## The navigator

Displays a precise zone of a photo.

The navigator also lets you move around in the image and display the desired zone in the workspace.

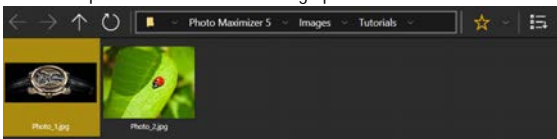
The zoom options let you adjust the amount of zoom to let you view the desired zone: a global view or a detailed view of your photo.





## The filmstrip

The filmstrip toolbar offers the following options:



### Navigation in your folders:

Displays all the images in a folder and opens them in the workspace.

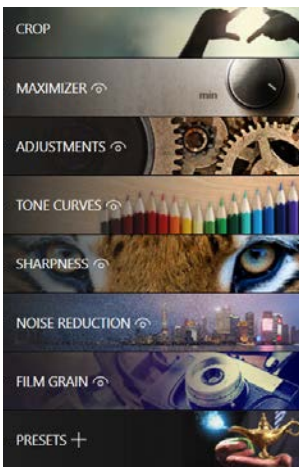
### Favorites:

Lets you add directories to Favorites so that you can find them quickly.

### Sort:

Sets the display order of the photos in the filmstrip. You can sort them by **Name**, **Date** or **Size**.

## Tabs



The tabs let you open different modules to retouch your photos. For more information on the settings of each module, consult the sections:

*Cropping a photo*

*Enlarge a photo*

*Adjust settings*

*Set a photo's tone scale*

*Adjust the sharpness manually*

*Denoise*

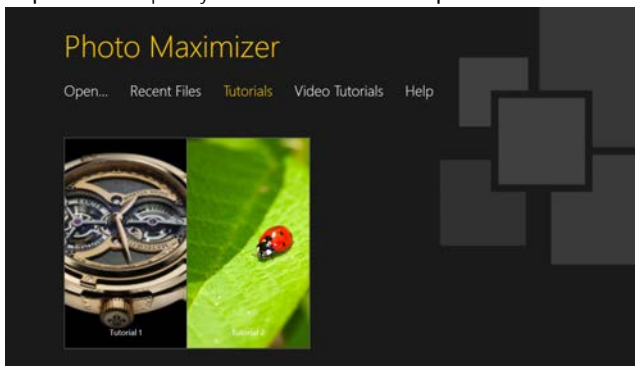
*Film Grain*

*Create and apply a preset*

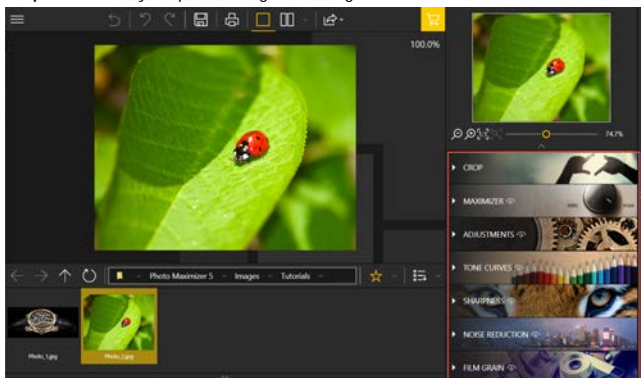
## Usage

Using each of the inPixio products modules is easy and consistent.

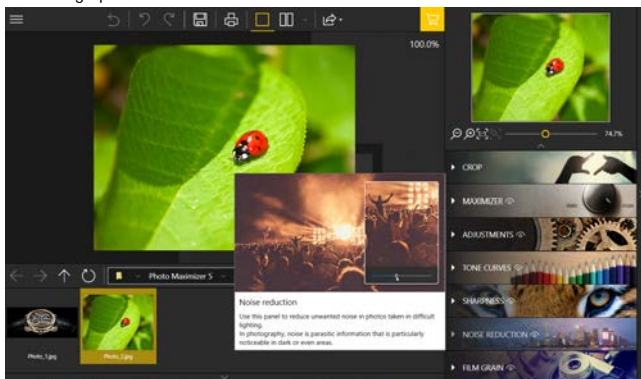
**Step 1:** Select the photo you want to retouch with the **Open** button.



**Step 2:** Retouch your photo using the setting bars and tools in the tabs.



Each tool now includes a mini-video for easy understanding of all editing and retouching options.



*Remark: You can disable the display of mini-videos at any time. To do so, click **Menu > Options** to display the **Options** window then uncheck the **Use video tooltips** box in the **Interface** section.*

**Step 3:** Save your creation by clicking the **Save** button.

For more details on the procedure for saving your reworked photo, see section *Saving a retouched photo*.

In each of its modules, inPixio has an option for cropping your photos. For more information, see section *Rotate and/or straighten a photo*.

## Cropping a photo

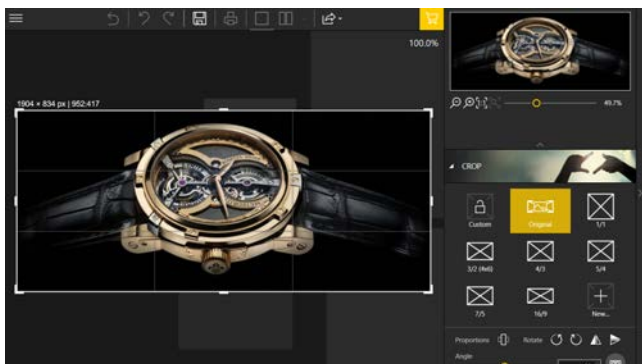
Photos are sometimes taken very quickly to capture an instant, to the detriment of framing. Whichever module you are in, inPixio lets you crop your photos.

1. On the right-hand panel, click **Crop** to display the relevant tab. Handles are displayed on your image.
2. Click a predefined format to automatically apply a predefined Cropping.

Or

Click **Custom** and use the handles to manually crop your photo to the dimensions of your choosing.

3. Click the **Crop** button to confirm the cropping of your photo.



4. To save the cropped photo, click the **Save** button. See section *Saving a retouched photo*.

You can also create a new format, a symmetry, rotate 90° or modify the angle of your photo.

## Choose a new format

1. On the **Crop** tab, click the **New** button. The New W/H Ratio dialog box is displayed.
2. Use the arrows to define your desired cropping proportions then click **OK**.  
The newly defined format is automatically applied and added to the list of available predefined formats.
3. Click the **Crop** button to confirm your cropped photo then the **Save** button.

## Rotate and/or straighten a photo

1. On the **Crop** tab, drag the slider on the **Angle** toolbar to modify the angle or use the **Rotate** function to rotate your photo 90° clockwise or counterclockwise.
2. Click the **Crop** button to confirm your cropped photo then the **Save** button.

---

## Saving a retouched photo

By default, the program prompts you to rename your retouched photo as **Photo\_InPixio.jpg** and save it in the default **Pictures** directory of your PC.

1. You can choose a new name and location if you so wish.
2. Click **OK** to confirm your choice.
3. Adjust the slider in the window that pops up to define the quality of your photo then click **Save**.

## Working with Photo Maximizer

inPixio Photo Maximizer will help you to rediscover sharp photos and exploit the creative potential of your photos. It couldn't get any easier than this! 1-Click Assistants were created to improve sharpness and adjust focus. And if you'd like to go even further than that, there are different preset tools available so you can both adjust and customise your presets.

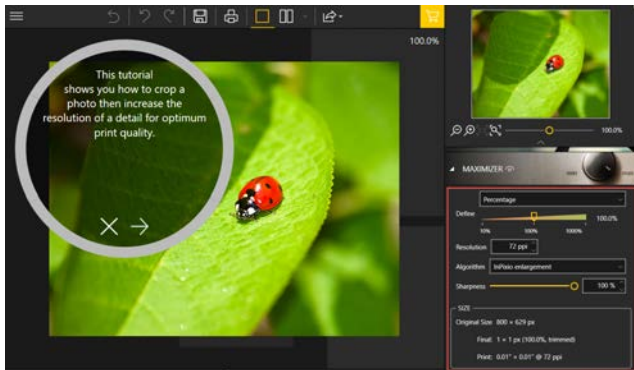
This module also lets you crop your photo, if necessary. For more information, see section *Cropping a photo*.

Open a photo and have a go!

### Enlarge a photo

inPixio Photo Maximizer includes smart technology to optimize the enlargement of any photo.

1. On the right-hand panel, click the **Maximizer** tab to display the corresponding tool.



2. Select the resizing method in the drop down menu and set the amount.
3. By default the **Percentage** method is suggested, with this method you can use the slider to set the percentage of enlargement you want.

4. Choose the desired resolution for your photo: to avoid quality loss, define resolution at **250 dpi**.
5. Note that the standard professional resolution is 300 dpi.
6. For optimum processing when resizing your photos, it is recommended to use the default algorithm: **InPixio enlargement**.

**Note:**

Use the **Lanzcos** filter to reveal and amplify details on images which have little or no high-contrast areas.

Use the **Bicubic sharper** method to preserve details when shrinking a photo. Use the **Bicubic smoother** method to enlarge a photo and obtain a smoother finish.

The **Nearest neighbor** algorithm allows you to keep sharp edges.

7. By default, the **Sharpness** slider is set at 100% for optimum sharpness. Depending on the quality of your photo, you can move the slider to the left to reduce sharpness and obtain the result you are looking for.

To instantly view the enlargement, click the icon **Switch between before and after views**.

## Adjust settings

Adjust settings to adjust brightness or colors and correct defects in a photo.

- On the right-hand tabs, click **Adjustments** to display the relevant module.

## Adjusting brightness and colors

In the **Adjustments** module, adjust the sliders on the different toolbars to optimize the rendering of your photo:

**Temperature:**

Move the slider to the left for cooler colors, and to the right for warmer colors.

**Hue:**

Move the slider left to add green to the photo, or move it right to add magenta. This setting acts like a filter.

**Practical example:** The light from the candles can tint a photo red; add a green hue to counteract this effect and make a photo look more natural.



**Exposure:**

Adjust the overall exposure of the image with the balancing value.

**Luminosity:**

Move the slider left to reduce luminosity, or right to increase it.

**Contrast:**

Move the slider left to intensify dark tones, or right to intensify light tones.

The following example illustrates the various settings: reduce **Shadows**, lower **Contrast**, increase **Clarity** and force **Saturation**.





**Shadows:**

Move the slider left to reduce the luminosity of dark tones, or right to increase it.

**Highlights:**

Move the slider left to reduce the luminosity of light or overexposed tones, or right to increase it.

**Clarity:**

Move the slider left to reduce contrast and sharpness, or right to increase them.

***Practical example of landscapes:*** A positive value on the **Clarity** slider reduces the blurred effect. This effect is particularly effective when applied to a landscape photo.

***Practical example of portraits:*** A negative value on the slider **Clarity** creates a particularly effective soft effect when applied to a portrait, as it smooths the skin tones.

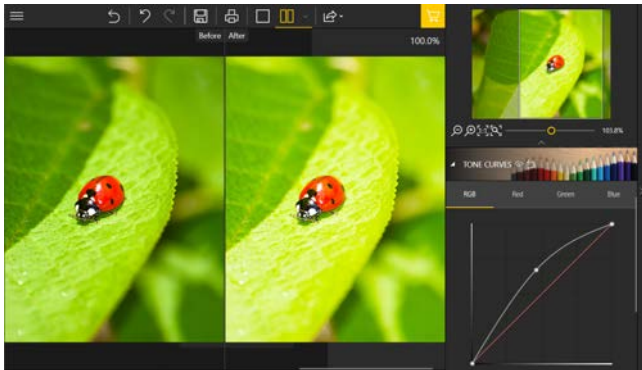
**Saturation:**

1. Move the slider left to reduce color saturation, or right to increase it.
2. To save the setting(s) applied to your photo, click the **Save** button. See section *Saving a retouched photo*.

## Set a photo's tone scale

1. On the right-hand tabs, click the **Tone Curves** module.

2. Adjust the curve by clicking it to modify and adjust dark and light tones.



3. To save the Tone Curves applied to your photo, click the **Save** button.  
See section *Saving a retouched photo*.

## Adjust the sharpness manually

Did you take a photo quickly with mistaken settings, or do you simply want to make your shot sharper?

1. On the right-hand tabs, click the **Sharpness** module.
2. Use the setting bars to increase sharpness.

### **Amount :**

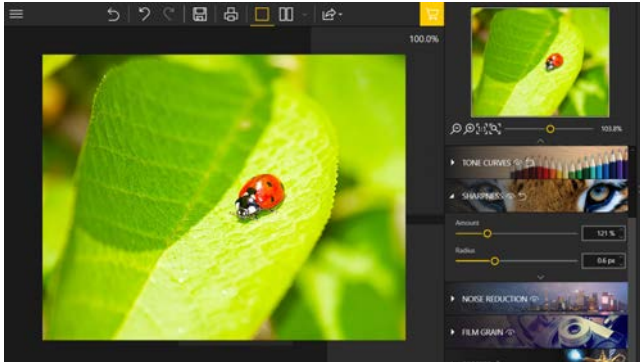
Move the slider right to heighten the details of the photo and enhance sharpness.

### **Radius :**

(Option enabled if you move the **Amount** slider)

Move the slider right to extend the radius to which the amount is applied to the details, or left to reduce it.

*Tip: A smaller radius is better suited to photos with very fine details taken with a good camera whereas a large radius is more suitable for photos with coarser details taken with a smartphone.*



**Masking :**

(Option enabled if you move the **Amount** slider.)

Move the slider right to reduce the formation of noise in solid-colored areas during processing.

## Denoise

This tool corrects noise problems in the darker or solid parts of your photos.

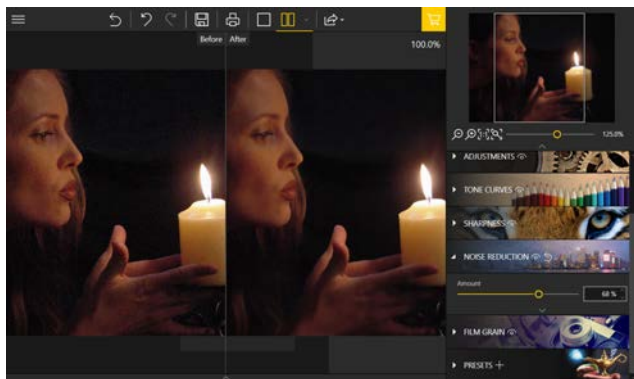
1. Click the **Denoise** tool.
2. Use the Amount slider to reduce noise.

### ■ Amount:

As you move this slider to the right, you'll notice that noise decreases.

■ **Radius:**

Move the slider to the right to increase the size of the denoising area around each pixel, or left to reduce



*Tip: A smaller radius is better suited to photos with very fine details taken with a good camera, whereas a larger radius is more suitable for photos with coarser details taken with a smartphone.*

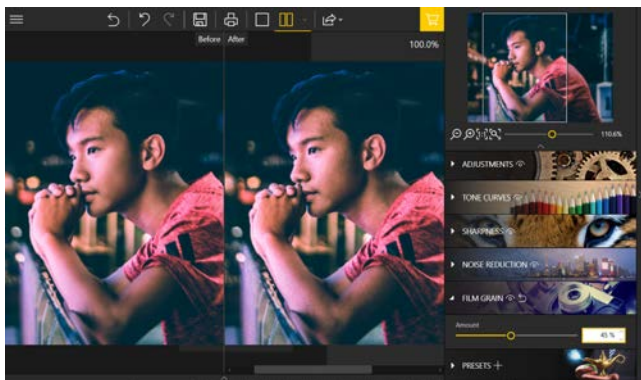
## Film Grain

Do you want to make your digital photo look like a silver film photo?

You can do this easily with the **Film Grain** module.

1. Click the **Film Grain** module.

2. Use the **Amount** slider to increase or reduce grain on your photo.



## Create and apply a preset

Have you found the right settings for a photo and wish to use them on other photos?

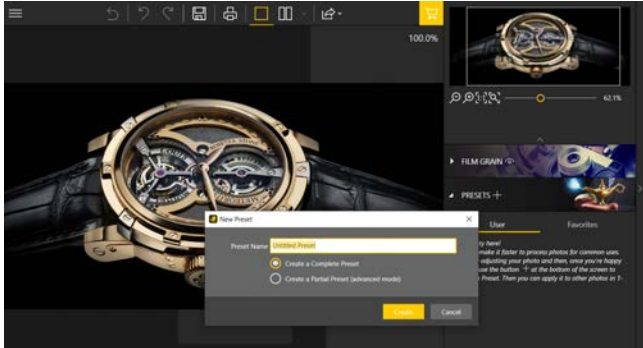
Nothing could be easier! Photo Editor lets you save your settings as a Preset. Once saved, you can apply it with just one click.

Different types of presets are at your disposal:

- **Complete Preset:** saves each setting made on each tab.
- **Partial Preset:** you can choose the settings you want to keep.

## Saving a complete preset

1. On the upper toolbar, click **Create Preset**. The New Preset window is displayed.



2. Enter a name for your preset in the corresponding field.
3. Click the **Complete** preset then click the **Create** button.

The **User Presets** category is displayed in the **Presets** tab: your preset is automatically added to this new category.

To apply this preset to another photo:

- Open the photo you want to rework, click the triangle of the **User Presets** category on the **Presets** tab then click the preset you want to apply to your new photo.

## Saving a partial preset

1. At the bottom of the right-hand panel, click **Create a preset with the current settings**. The New Preset window is displayed.
2. Enter a name for your preset in the corresponding field.
3. Click **Create a partial preset**: the dialog box displays the list of corrections to be saved.
4. Check the settings you wish to keep then click the **Create** button.



## For more information...

### inPixio on the Internet

If you have an Internet connection, check our site regularly for information on our new products and available updates: <https://www.inpixio.com/>

### Technical Support

For support with inPixio photo products, please contact the online help community:

<https://inpixio.zendesk.com/hc/en-us>

### Compatibility

The screenshots in this guide show the application being used in a Windows® 10 environment. Views in a compatible environment may differ significantly, but the features of the product do not change.

### Copyright

© 2020 Avanquest Software. All rights reserved.

This documentation is protected by copyright law. All rights are reserved, in particular the right of reproduction, propagation and translation.



